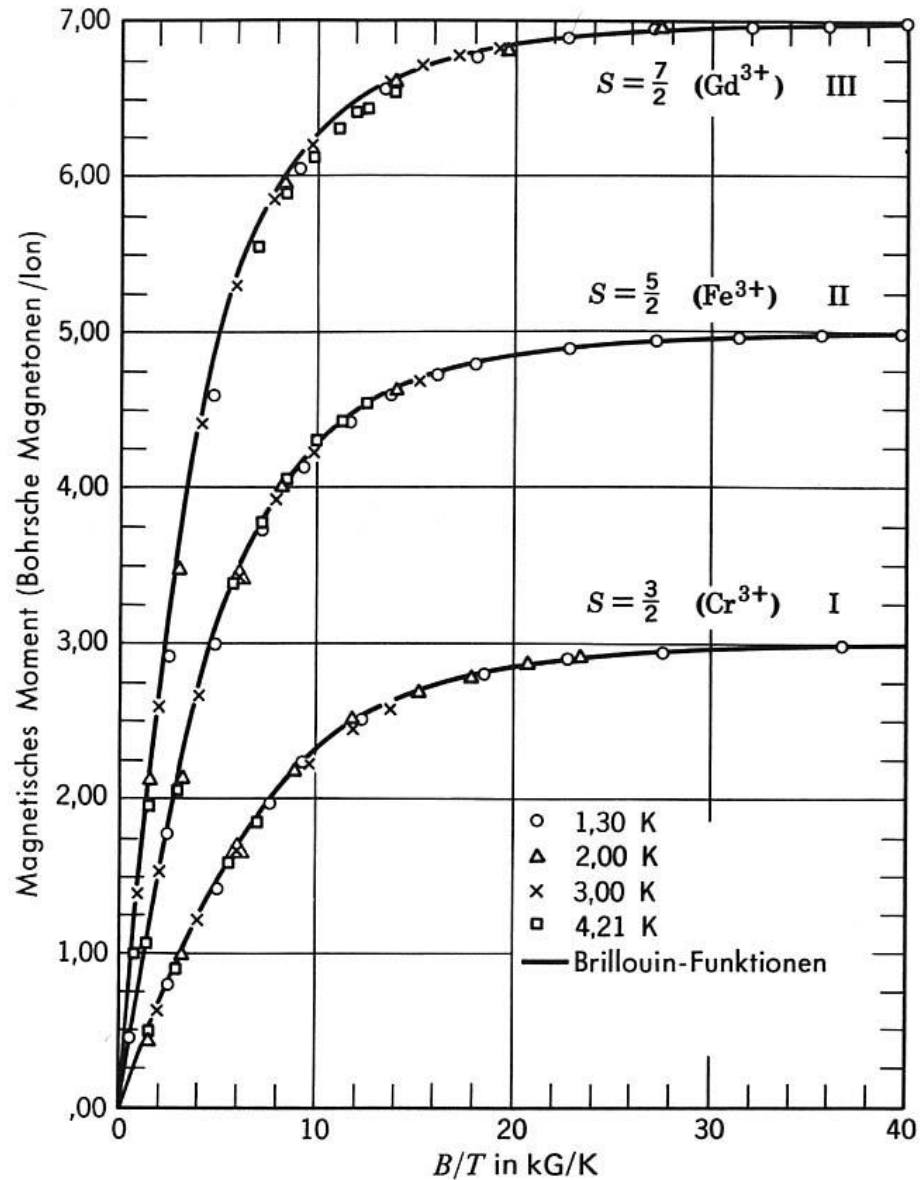
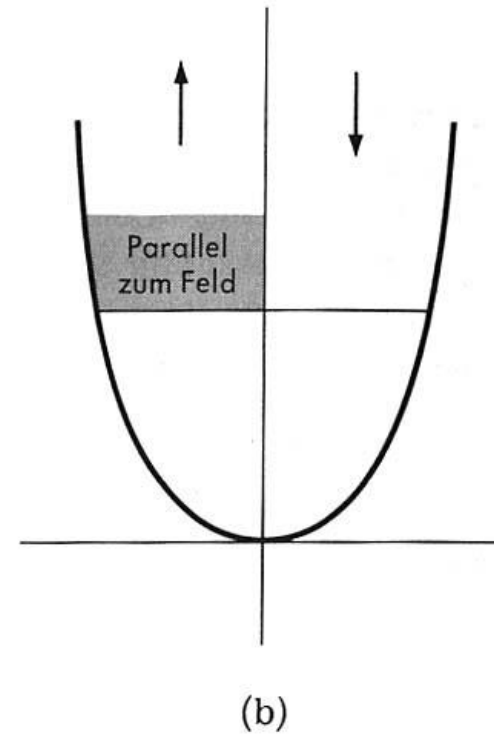
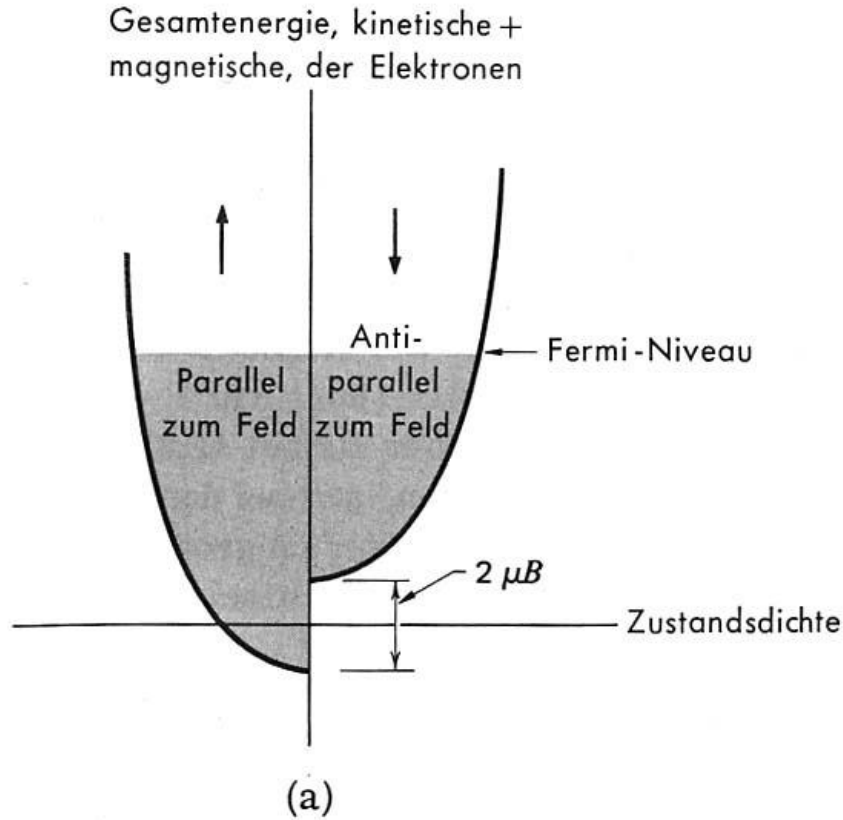


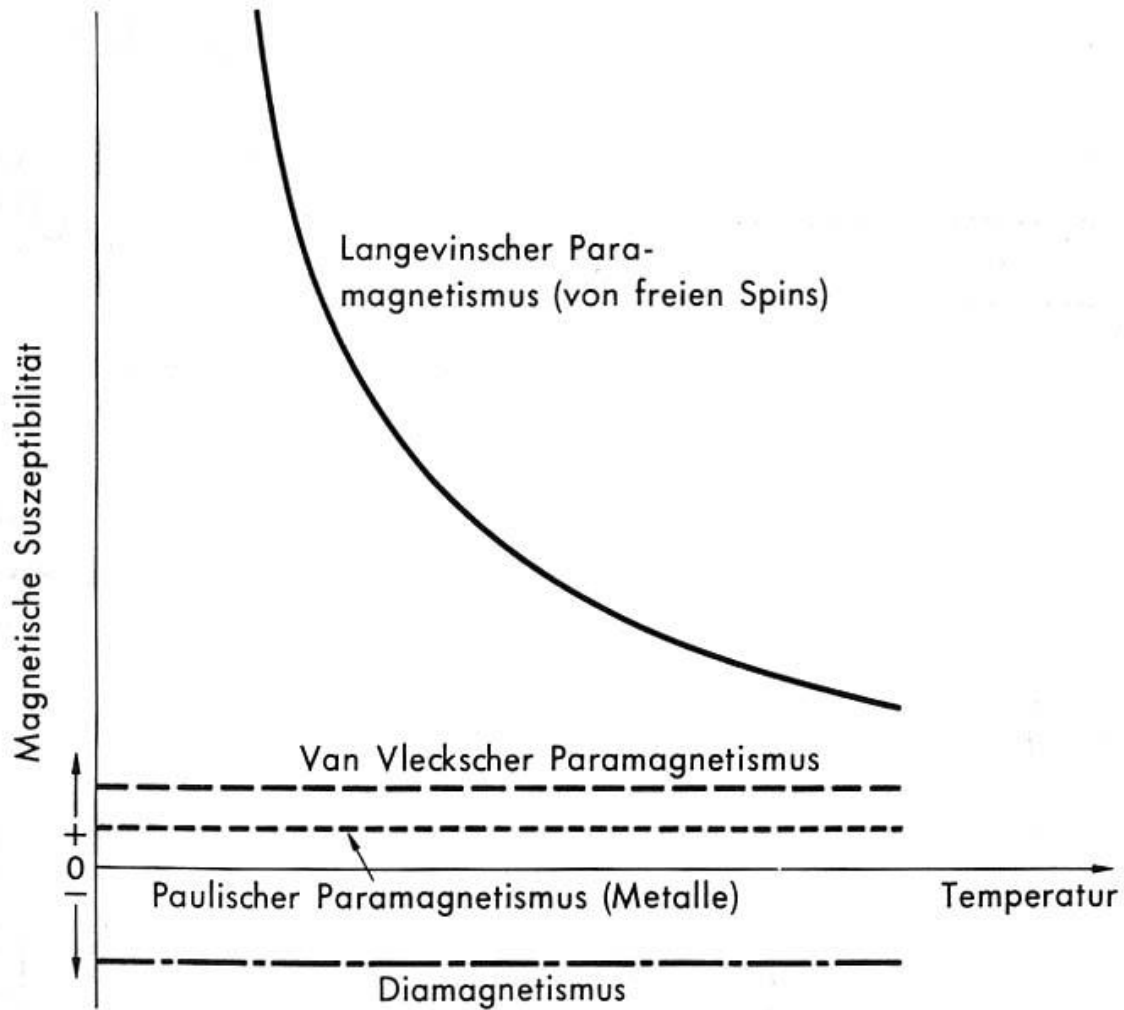
Magnetismus



Paramagnetismus:
 Brillouinfunktion



Paramagnetismus: Beitrag freier Elektronen

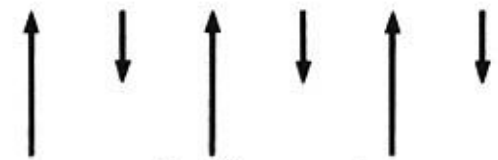




Einfacher Ferromagnet



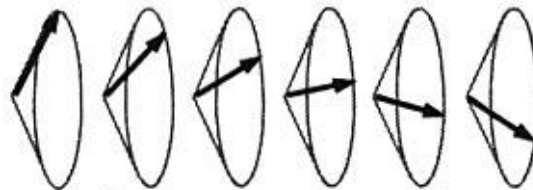
Einfacher Antiferromagnet



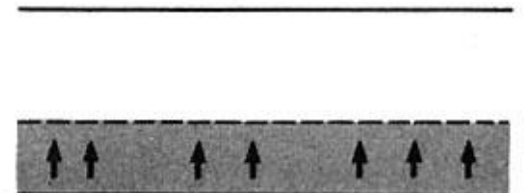
Ferrimagnet



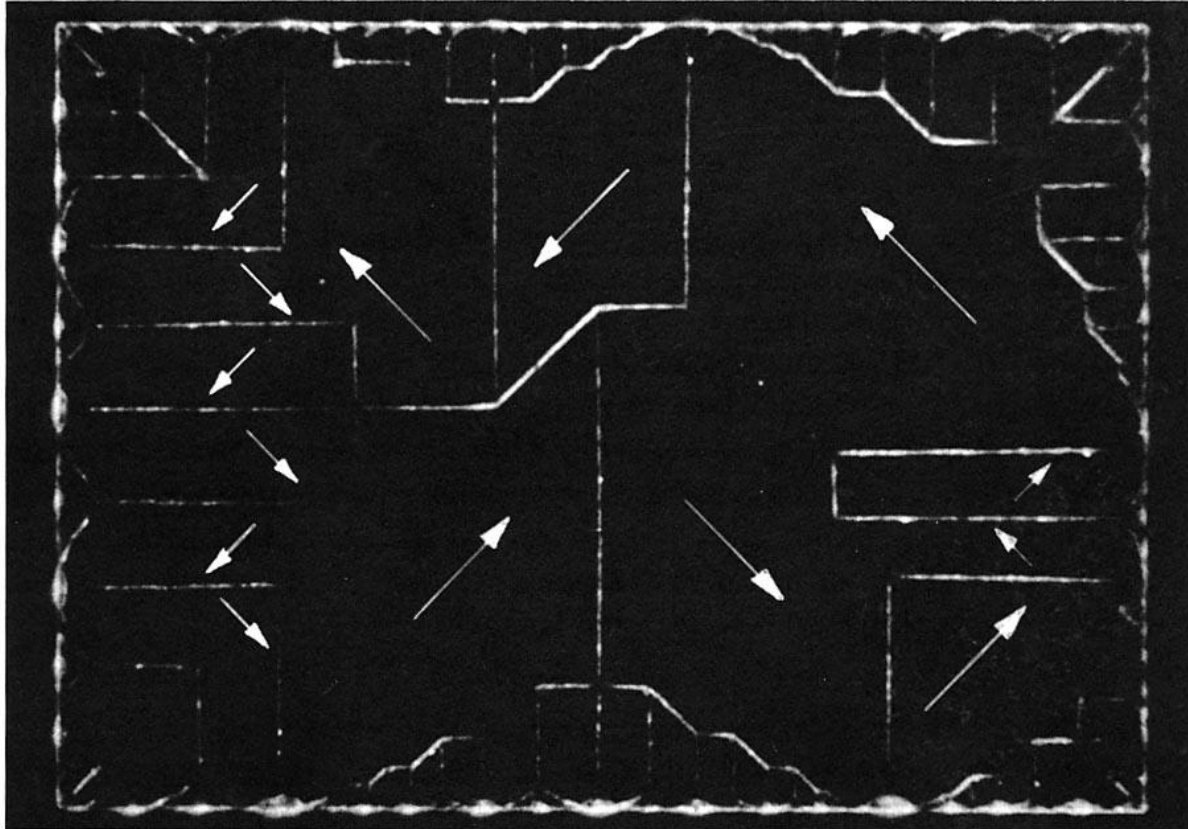
erkippter Antiferromagnet



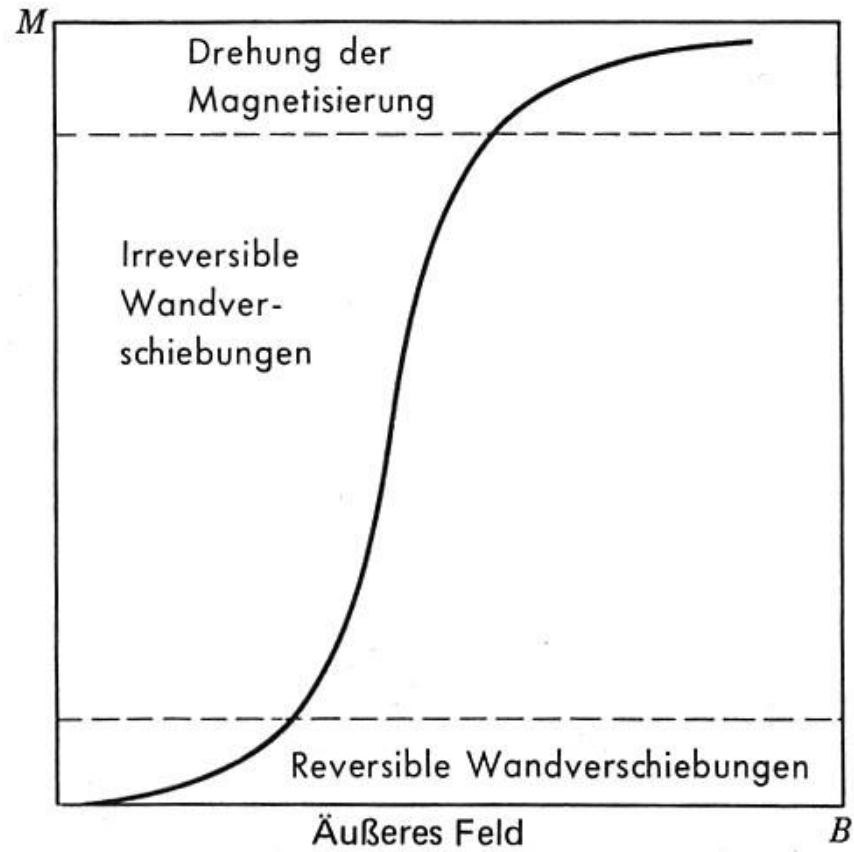
Spiralförmige Spinanordnung



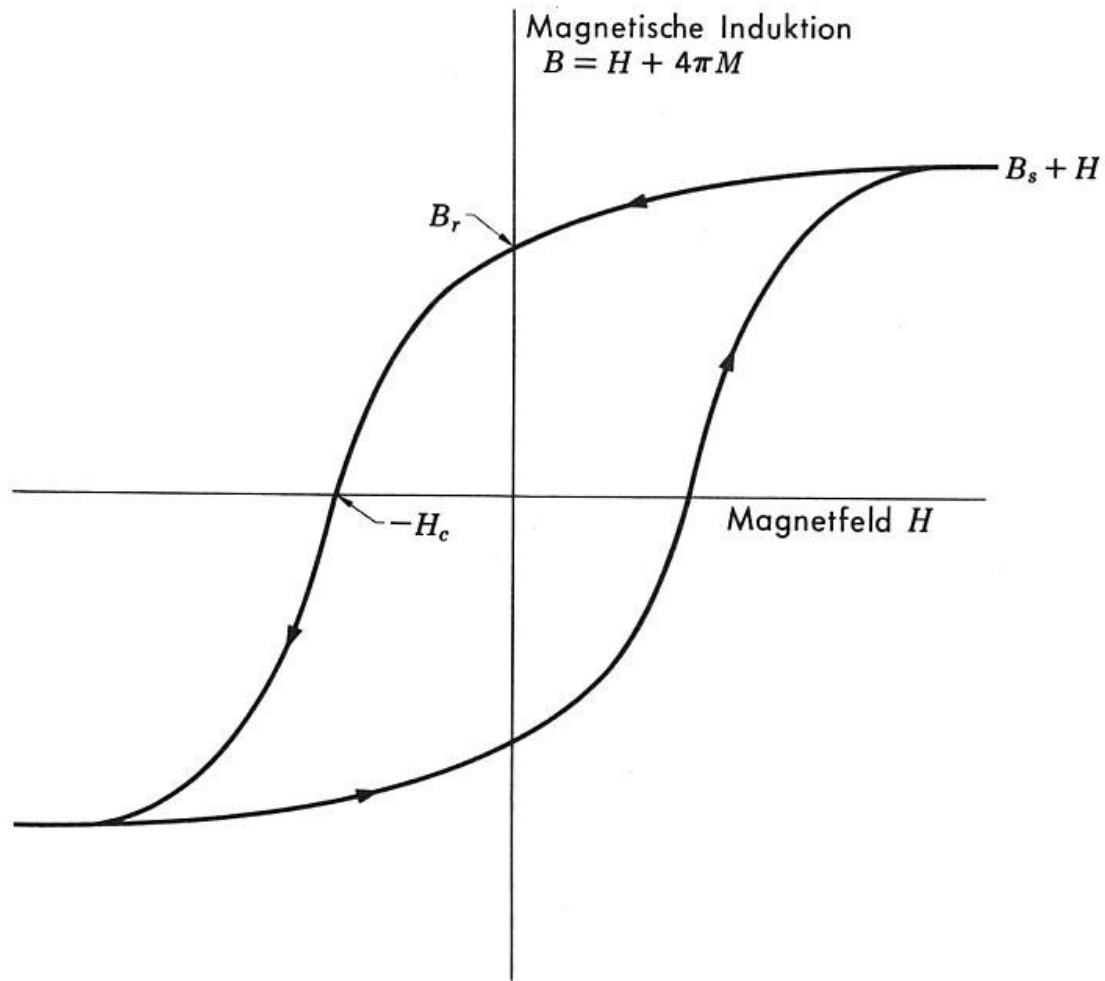
Ferromagnetisches Energieband



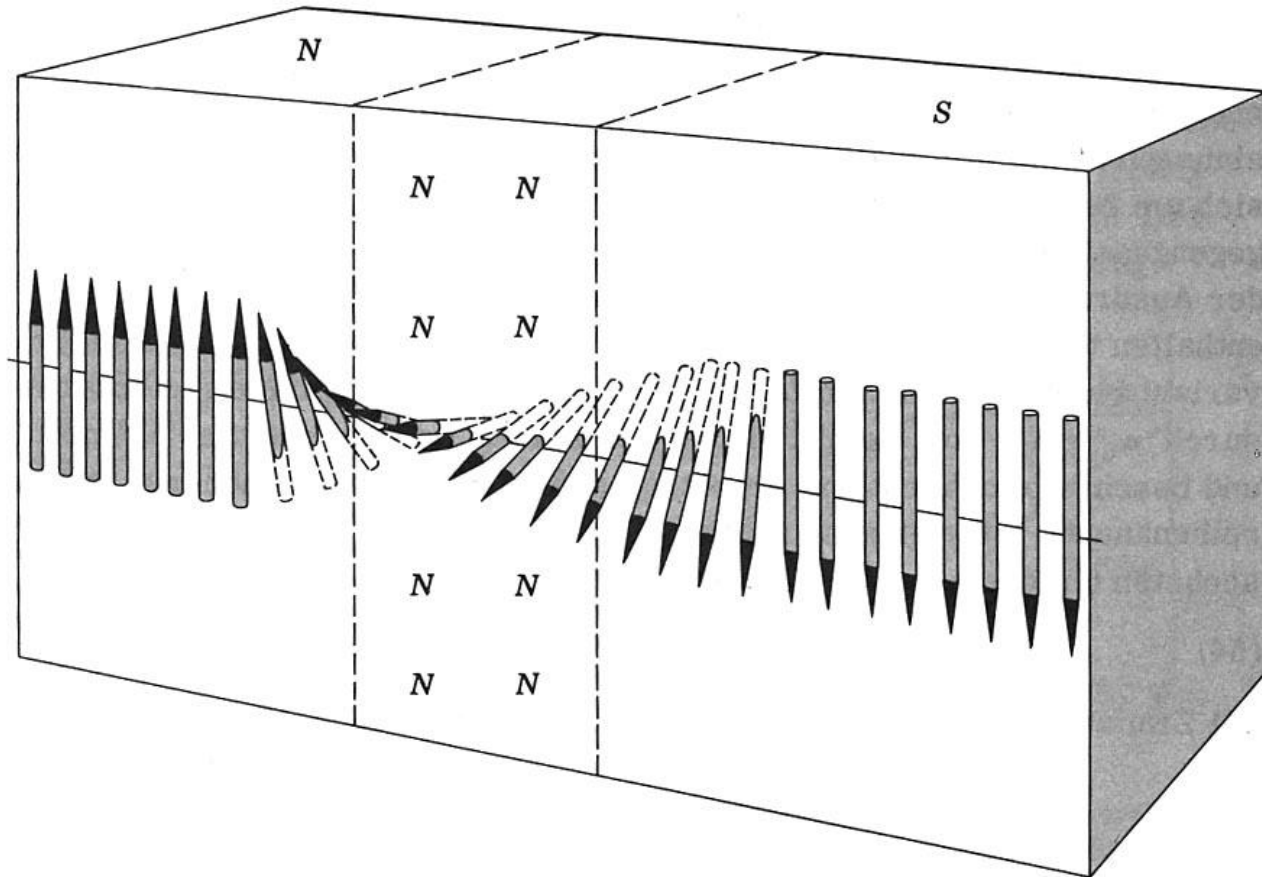
Domänenstruktur



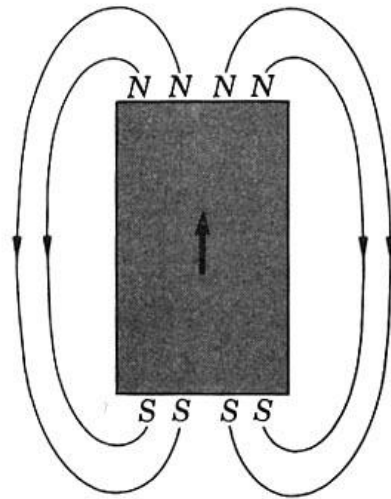
Magnetisierungskurve



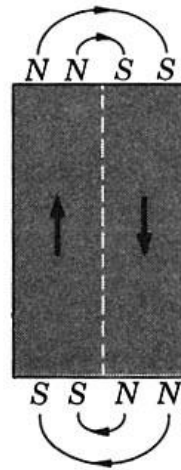
Hysteresekurve



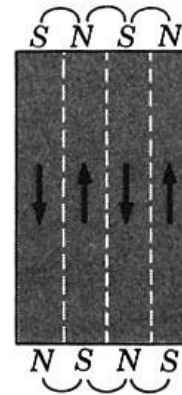
Wand zwischen zwei Domänen: Bloch-Wand



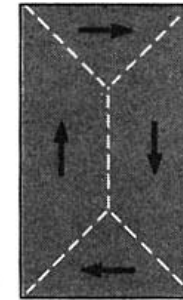
(a)



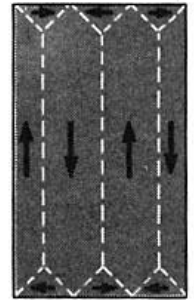
(b)



(c)

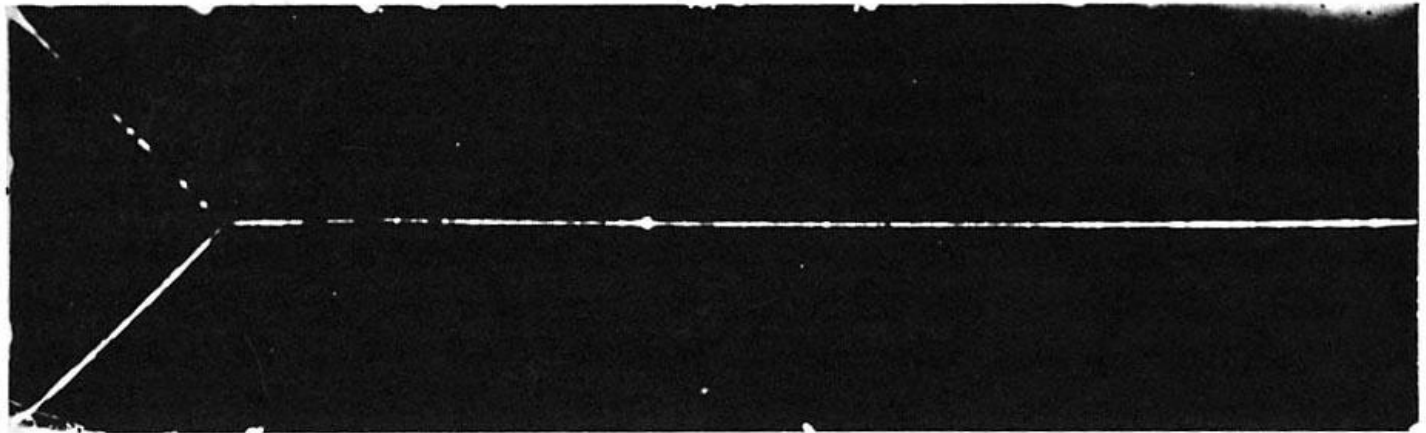


(d)

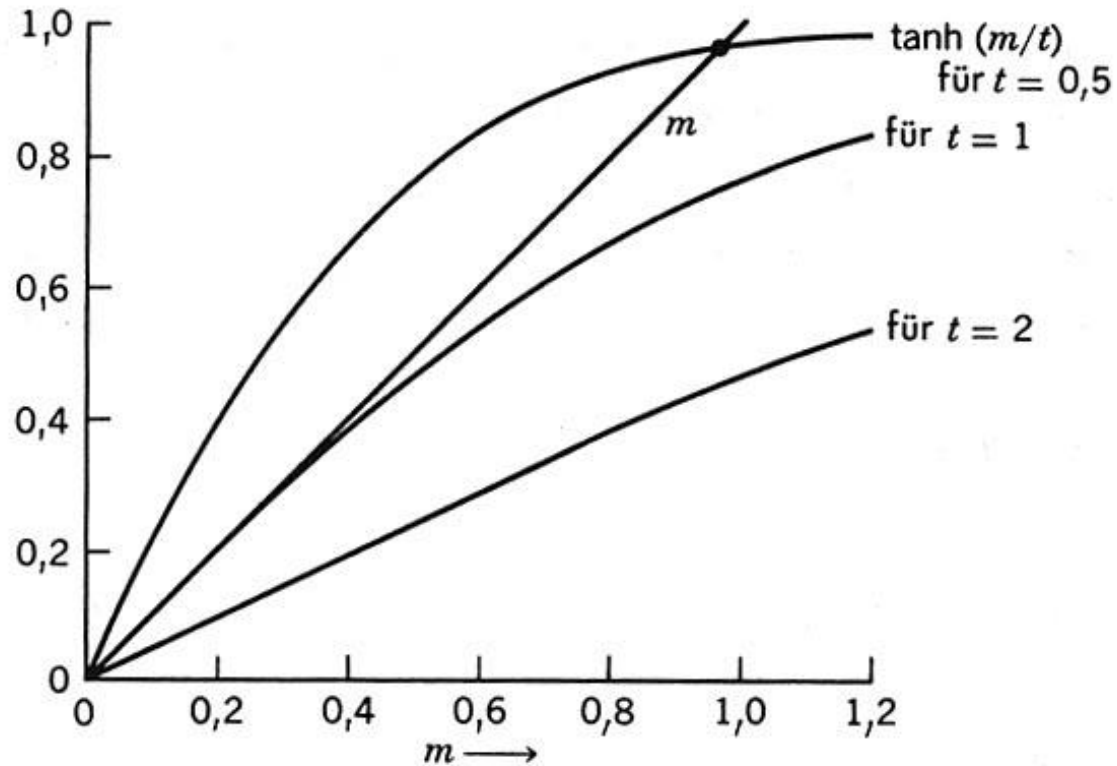


(e)

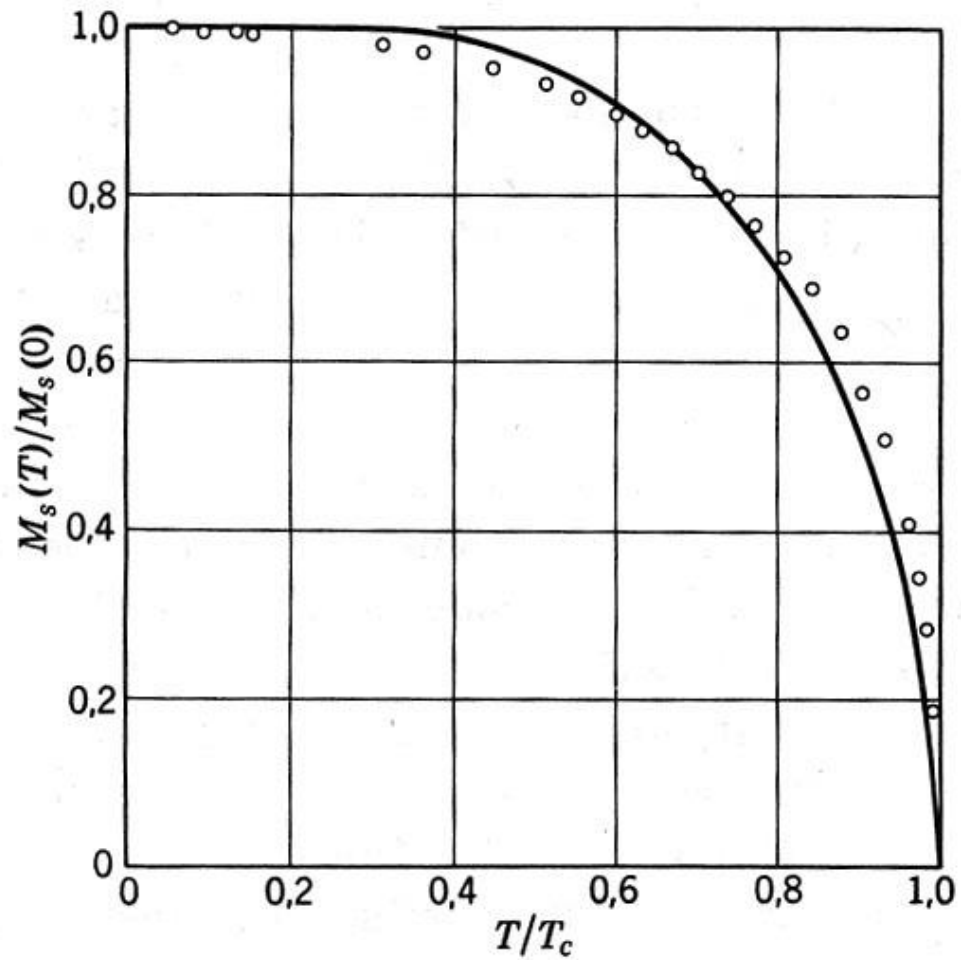
Ausbildung der Domänenstruktur



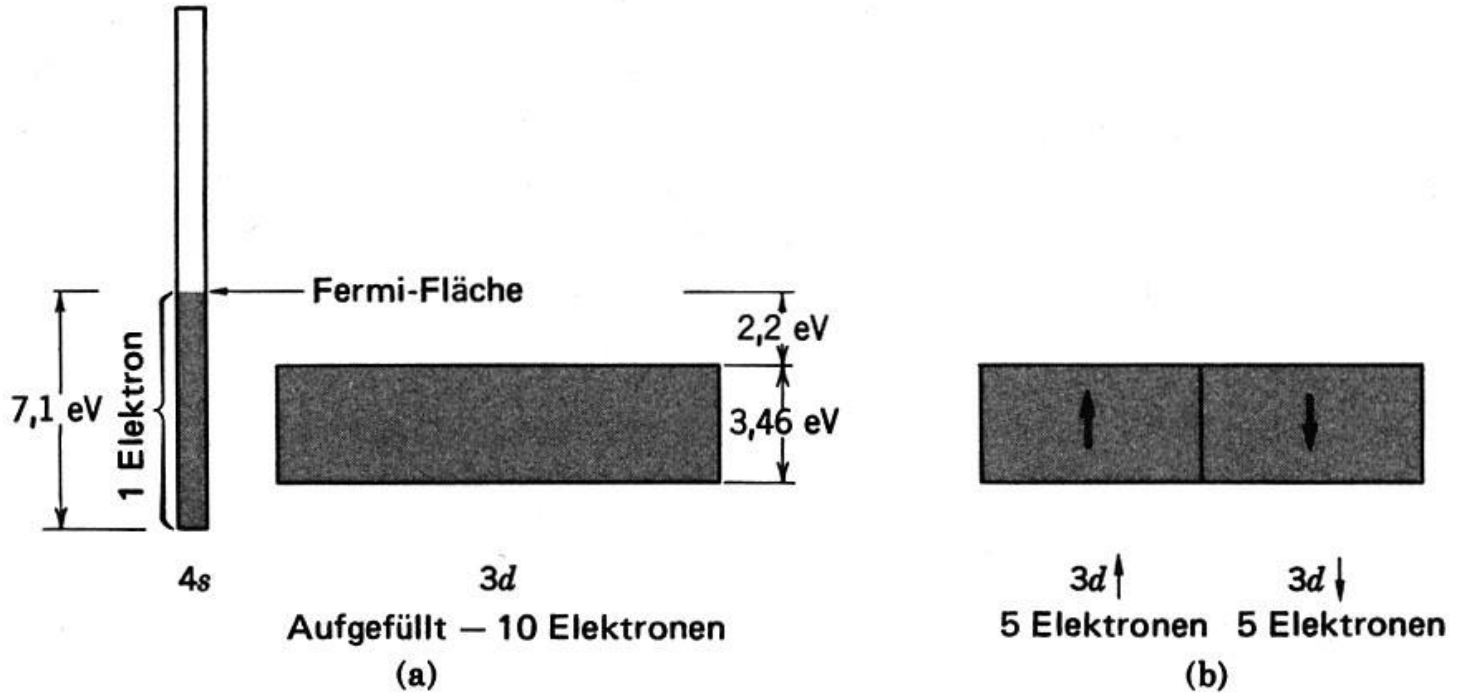
Exp. Aufnahme einer Dpmänenstruktur



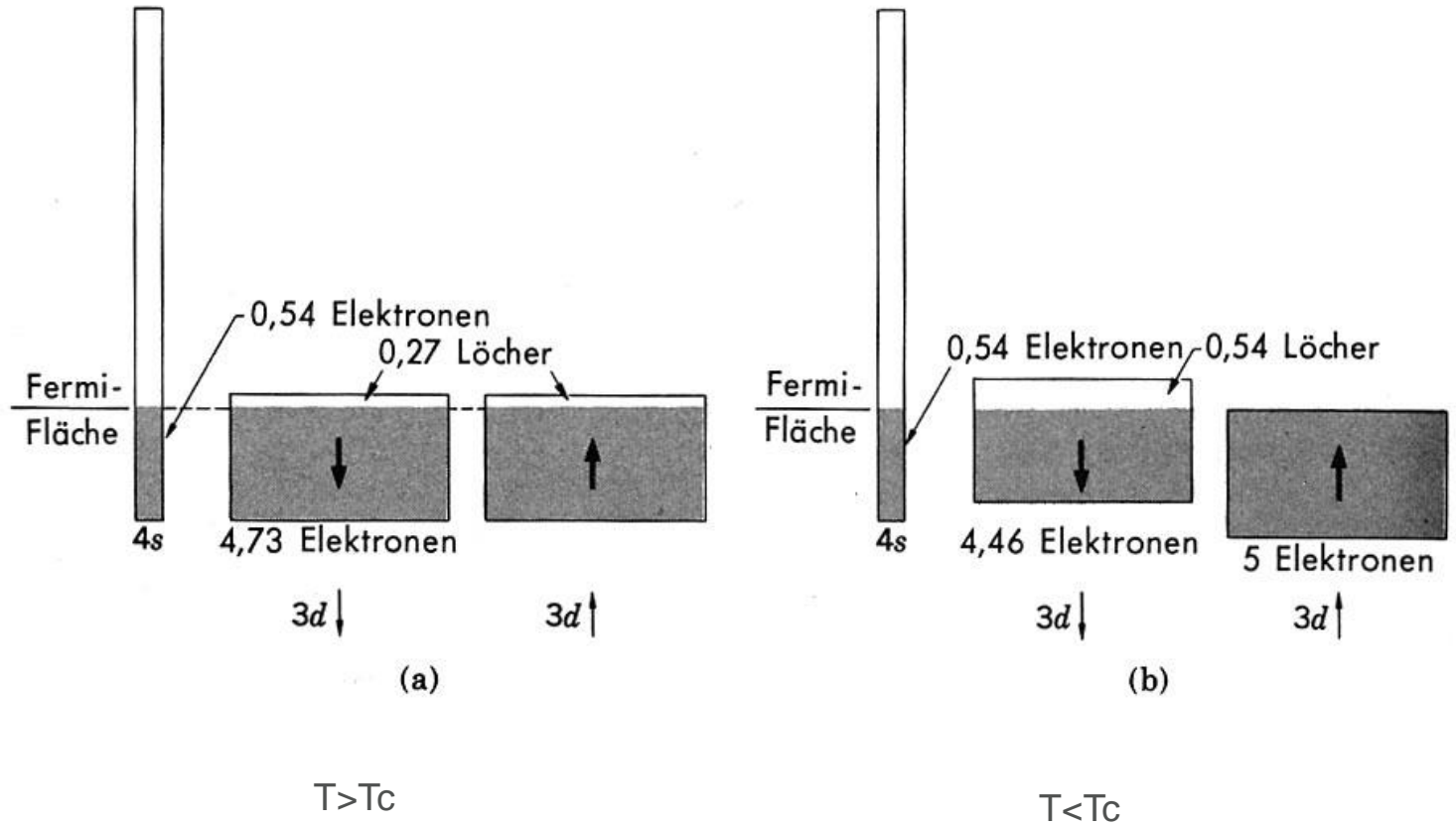
Bestimmung der spontanen Magnetisierung unterhalb der Curie-Temperatur



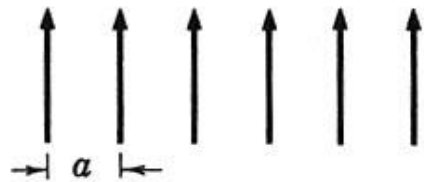
Temperaturabhängigkeit der Sättigungsmagnetisierung



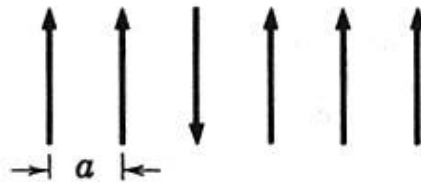
Kupfer



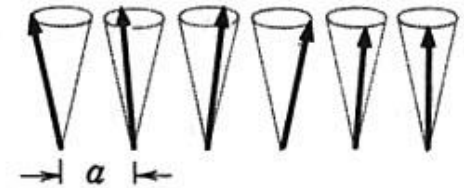
Nickel



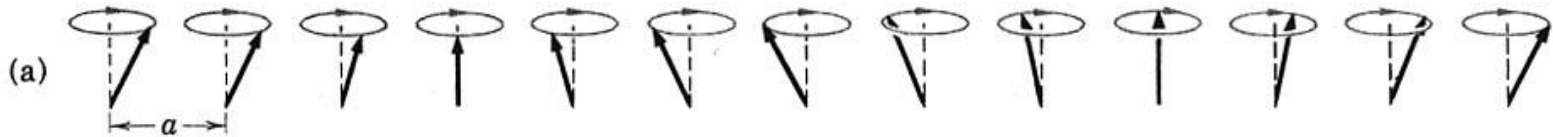
(a)

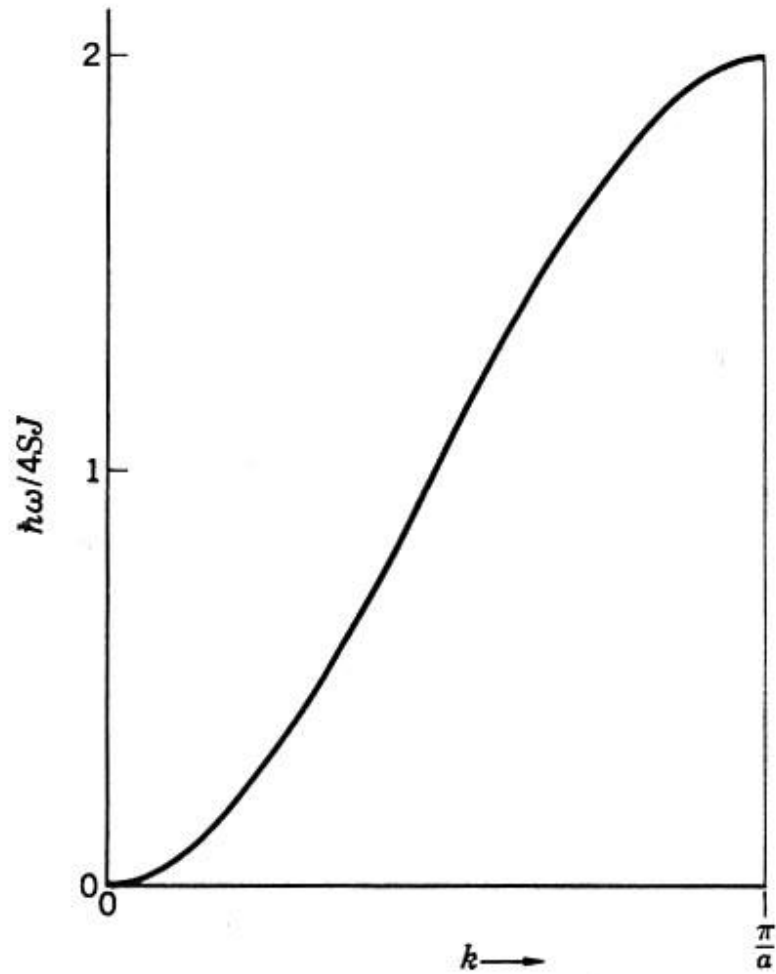


(b)



(c)





Dispersionsrelation der Magnonen